

# High Efficiency Laser Alignment System HELAS Plus

**Efficiently and Accurately Measure and Plot all critical data in less than 1 hour!**

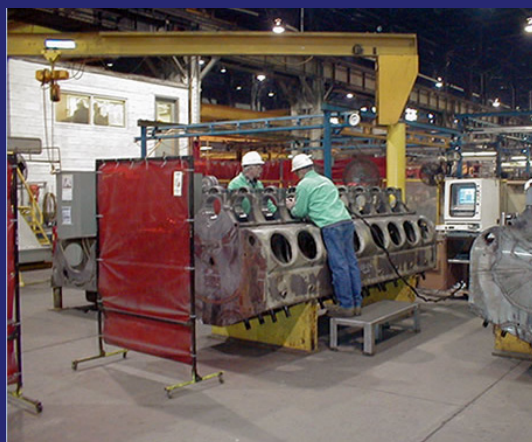
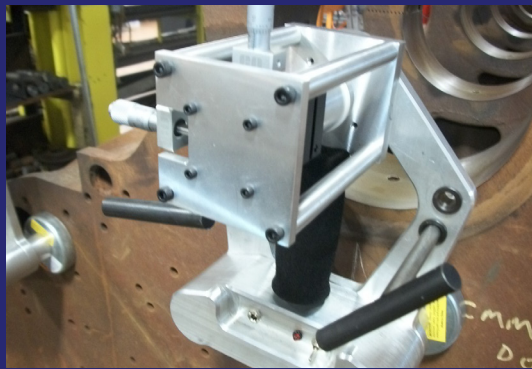
## AEI Process

The HELAS Plus is the fastest and most accurate machine available for measuring EMD Crankcases.

## Advantages

**The new package will complete the following:**

- Measure position and diameter of Main Bearing Bores
- Produce a Road map to complete the work efficiently
- Measure Cam Pads
- Pan Rail flatness
- End Sheet Squareness
- Distance from Main Bore to Cam Pads
- Distance from Head Seat to Main Bores
- Distance from Rear End Sheet to Thrust Surface
- Distance between Thrust Surfaces
- Serrations on Caps
- Serrations on Case
- Overall Length
- Time Tracking
- Statistical Analysis for Quality Control
- Technician Tracking



**See Why Advanced Engineering Is the Leader in  
EMD Crankcase and Pan Remanufacturing Equipment!**

**FOR MORE INFORMATION CONTACT US TODAY**

Advanced Engineering Industries  
201 S. Mill Street  
South Lyon, MI 48178

248.486.0354 office  
248.437.0007 fax  
[www.aei-quality.com](http://www.aei-quality.com)